

# ZEUS

## THE ULTIMATE NIGHT-VISION SYSTEM

***Ideal for Private Vessels such as Superyachts, Expedition Yachts & Sportfishing Yachts as well as Commercial, Law Enforcement, Fire Boats and Military Vessels on land or sea***

### Product Features

- Lock-On Target-Tracking via 8 different motion correlation algorithms.
- Target tracking via NMEA integration of Radar ARPA & AIS data.
- 2-Axis Fiber-Optic Gyro-Stabilized with On Screen Heading Indicator.
- Triple camera configuration - featuring simultaneously viewable independent Infra-Red Thermal & Ultra Low-Lux Imaging Sensors and a High Resolution Color Camera capable of more than 300x Zoom.
- The Thermal Imager allows for safe operation in total darkness.
- The 10x Zoom Low-Light .00015/ Lux camera amplifies even barely discernible light to render a crisp detailed picture in adverse navigational conditions.
- Ideal Surveillance platform for any time of day with optional recording capability.
- Standard IP Control.
- 24 Month Warranty.



Standard LCD Touch Screen Control Unit

### Product Construction

- Unique "Quick-Release Base" facilitates easy service or system sharing between vessels.
- Sealed & heated camera enclosure will withstand the harshest of marine environments.
- Machined from marine grade solid billet aluminum.
- Saltwater & corrosion resistant construction with rugged triple primed and sealed, powder coated marine grade aluminum housing.



**OceanView** allows your journey into total darkness, low-light, twilight, torrential rain, some fog conditions and even intense sun to become a safe and cautious one.

**OceanView** is the time tested leader in Marine Night-Vision Cameras. Navigation, Surveillance and Safety - your priorities are our priorities!

**OceanView** cameras provide clear images in any light or environmental conditions. We offer a full line of combination thermal imaging, low-

light and color cameras. Our systems offer seamless integration with any marine monitor or TV and integrate easily with all marine electronics available today. We offer a solution appropriate to fit every need.

OceanView camera systems may be controlled by the U.S. Government for export purposes. They may not be exported or re-exported without first consulting relevant U.S. Export Administration Regulations or International Traffic in Arms Regulations and obtaining the proper USG approvals. They may not be used in the design, development, production or use of nuclear, chemical or biological weapons or missiles. Contact OceanView Technologies Inc. for more information.



**OceanView Technologies, Inc.**

1181 South Rogers Circle Boca Raton FL, USA 33487  
954.727.5139 • [www.nightboating.com](http://www.nightboating.com) • [sales@oceanviewtech.com](mailto:sales@oceanviewtech.com)

# ZEUS

## SPECIFICATIONS

### Thermal Imager Specifications

Resolution:	320 x 240
Detector Type:	Uncooled Microbolometer
Spectral Response:	7 to 14um
Field of View:	23°, 14° or 9° (23° standard)
Video Output:	NTSC (PAL Optional) & VGA
Image Control:	Polarity (white/black Hot)
Zoom:	2x Digital
Frame Rate:	30Hz USA, 9Hz International
Human Detection Range:	1,000 @ 23° FOV (standard) 2,000 @ 14° FOV 3,000 @ 9° FOV

### Ultra Low Light Imager

Resolution:	570 TV Lines
Picture Element:	437k Pixels
Scanning System:	2:1 Interlaced
Minimum Scene Illumination:	0.00015 Lux
Lens (Focal Length):	12mm-120mm
Angle of View:	30° - 3°
Zoom:	10x Optical

### Daylight Color Imager

Resolution:	NTSC: 470 TV Lines PAL: 460 TV Lines
Picture Element:	NTSC: 630k Pixels PAL: 740k Pixels
Zoom:	26x Optical Zoom 12x Digital Zoom 312x Total Zoom
Angle of View (horizontal):	42° to 1.6°
Minimum Scene Illumination:	2.0 Lux
Recommended Illumination:	100 to 100k Lux
Signal to Noise Ratio	50db
Image Stabilizer	10Hz Frequency

### Product Specifications

Camera Size:	14.00" w x 15.65" h x 13.41" d 35.56cm w x 39.75cm h x 34.06cm d
Camera Weight:	52lbs
Color:	Awlgrip Matterhorn White
Voltage:	24 VDC
Power Consumption:	16 amps peak/6 amps cont
Operation Temp:	-12° to 50°C to IP66 spec
Environmental Enclosure:	IP68 spec
Pan Speed:	0.0005° to 50°/sec
Tilt Range:	71° up & 75° down
Tilt Speed:	0.0005° - 25° per second
Pan:	360° continuous
Swept Volume:	22.5" diameter x 17.88" tall
Stabilization:	2 axis fiber-optic gyro stabilization
Max Length Control Cable:	4,000' of cat5
Max Length Video Cable:	4,000' of cat5
Control Stations:	Maximum of 32
Radar Integration	NMEA ARPA tracking

### LCD Control Unit Specifications

Dimensions:	9.17" w x 6.4" h (23.29cm w x 16.25cm h)
-------------	---

### 10 Button Joystick Camera Control Unit

Dimensions:	6.8" w x 4.8" h x 2.3" d (17.27cm w x 12.19cm h x 5.84cm d)
-------------	--



Optional Waterproof Joystick Control Unit

## Camera Control Units

The Standard LCD Touchscreen Control Unit is simply the finest camera controller available in the market. It has easy to navigate separate pages that control each of the three cameras and other screens that control the cameras Stabilization, Target Tracking and other functions. The **Zeus** camera is also available with an optional 10 button Joystick Control Unit for outdoor use. It is easy to operate and won't let you down in adverse weather conditions. You may use a combination of up to 32 Control Units as you would like anywhere on the vessel to control your **Zeus** camera.

The Camera has an on-screen Direction Indicator that is always viewable in the upper left corner of your helm displays or any television.

## The Best View... an OceanView

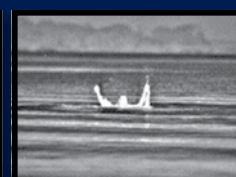
***OceanView is the time tested leader in Marine night-vision cameras. Navigation, surveillance and safety your priorities are our priorities!***



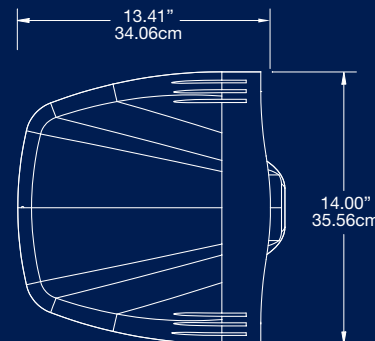
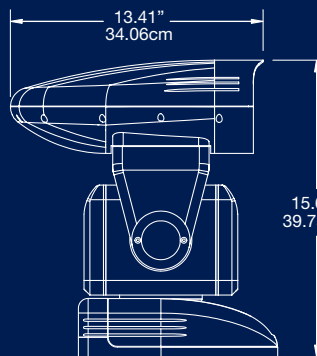
Thermal Image



Ultra-Low-Light Image



Thermal Image



**OceanView Technologies, Inc.**

1181 South Rogers Circle Boca Raton FL, USA 33487  
954.727.5139 • [www.nightboating.com](http://www.nightboating.com) • [sales@oceanviewtech.com](mailto:sales@oceanviewtech.com)