

APOLLO II HD

HIGH DEFINITION
NIGHT-VISION DUAL-CAMERA
THERMAL & ULTRA-LOW-LIGHT
SYSTEM

*Ideal for Sport-Fisherman,
Expedition Yachts, Mega Yachts,
Sport Yachts, Center Consoles,
as well as Commercial, Law Enforcement,
Fire Boats and Military Vessels.*



Product Features

- Dual camera configuration - featuring simultaneously viewable independent Infra-Red Thermal & Ultra-Low-Light Imaging Sensors.
- High Definition 640 x 480 Thermal Imager - the Highest Definition available.
- The Thermal Imager allows for safe operation in total darkness.
- The Low-Light .00015 Lux, camera amplifies even barely discernable light to render a crisp detailed picture in adverse navigational conditions.
- Pan, Tilt and 4x Digital Zoom.
- Thermal image has a choice of 5 finger tip controlled color palettes.
- Return to "Home" position control on the Control-Unit Camera Direction Indicator.
- Low profile, classic, ergonomic design
- Sealed & heated camera enclosure to withstand the harshest of environments.
- Saltwater & corrosion resistant construction with rugged triple-primed marine grade aluminum housing.
- Optional Interface for IP Control and Viewing Video.
- The Apollo II is simple to use and requires no training.
- 24 Month Warranty.



Apollo Thermal Image
viewed on Optional VEI Monitor

OceanView Technologies Thermal Camera Systems offer you the piece of mind to boat safely and enjoyably at night. The Apollo II HD camera delivers more than four times the resolution than that of other cameras. Sharp detail and double the range at a reasonable cost. Combine the High-Definition thermal imager with the laser sharp low-light imager and you have the industry leading, state-of-the-art, Apollo II HD.

OceanView is the time tested leader in Marine night-vision cameras. Navigation, surveillance and safety - your priorities are our priorities!

OceanView cameras provide clear images in any light or environmental conditions. We offer a full line of thermal imaging options as well as low-light cameras and high quality color cameras. Our systems offer seamless integration with any marine monitor or TV and integrate easily with all marine electronics available today. We offer a solution appropriate to fit every need.

OceanView camera systems may be controlled by the U.S. Government for export purposes. They may not be exported or re-exported without first consulting relevant U.S. Export Administration Regulations or International Traffic in Arms Regulations and obtaining the proper USG approvals. They may not be used in the design, development, production or use of nuclear, chemical or biological weapons or missiles. Contact OceanView Technologies Inc. for more information.



OceanView Technologies, Inc.

1181 South Rogers Circle Boca Raton FL, USA 33487
954.727.5139 • www.nightboating.com • sales@oceanviewtech.com

APOLLO II HD

SPECIFICATIONS

Thermal Imager Specifications

Resolution:	640 x 480
Detector Type:	Uncooled Microbolometer
Spectral Response:	7 to 14um
Field of View:	36°
Zoom:	4x Digital
Video Output:	NTSC (PAL Optional)
Frame Rate:	30Hz Standard, 9Hz (Int'l)
Human Detection Range:	1,400' (426.7m) with 36° FOV

Ultra Low Light Imager

Resolution:	570 Lines
Picture Element:	379K Pixels
Scanning Rate:	2:1 Interlaced
Minimum Scene Illumination:	0.00015 Lux
Lens (Focal Length):	25mm
Field of View:	15°

Product Specifications

Camera Size:	9.0" w x 8.0" h x 9.0" d (22.9cm w x 20.3cm h x 22.9cm d)
Weight:	7.5lbs (3.4kg)
Material:	Corrosion resistant aluminum alloy
Color:	Marine White
Voltage:	9-32VDC
Power Draw:	7 watts
Operation Temp:	10° to 122°F (-12° to 50°C), IP66 Rated
Environmental Enclosure:	IP67 Rated
Tilt Angle:	10° up & 17° down
Tilt Speed:	7° per second
Pan:	360° continuous
Pan Speed:	Fast 28°/sec & slow 15°/sec
Swept Volume:	12" diameter x 8.5" tall (30.48cm dia. X 21.59cm tall)
Max Control Cable length:	100' (30.48m)
Max Video Cable length:	65' (19.812m)
Operation:	LCD Control Unit
Control Stations:	Maximum of 6

Camera Control Unit Specifications

Dimensions:	6.75" w x 2.75" h x 2.0" d (17.145cm w X 6.985cm h x 5.08cm d)
-------------	-------------------------------------------------------------------



Thermal Image

The Best View... an OceanView

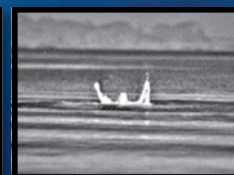
OceanView is the time tested leader in Marine night-vision cameras. Navigation, surveillance and safety your priorities are our priorities!



Thermal Image



Ultra-Low-Light Image



Thermal Image



Apollo II
LCD Control-Unit

Camera Control-Unit Features

The **Apollo II Control-Unit** is the most sophisticated on the market today and it is simple to operate. It utilizes menu pages for ease of control of the operational features of the **Apollo II Dual Camera System**. It controls the Zoom, Pan and Tilt, color palettes and control-unit brightness. The unique Auto-Bright function in the menu adjusts the view on the display to the perfect brightness in any light condition. The initial display screen on the Control-Unit itself allows simple aiming of the camera using the four arrow buttons, with subsequent menu pages offering a range of other control options.

The Camera Direction Indicator is clearly visible in the lower left corner of the Control-Unit.



OceanView Technologies, Inc.

1181 South Rogers Circle Boca Raton FL, USA 33487
954.727.5139 • www.nightboating.com • sales@oceanviewtech.com