

APOLLO II

NIGHT-VISION DUAL-CAMERA
THERMAL & ULTRA-LOW-LIGHT SYSTEM

*Ideal for Sport-Fisherman,
Expedition Yachts, Mega Yachts,
Sport Yachts, Center Consoles,
as well as Commercial, Law Enforcement,
Fire Boats and Military Vessels.*

Apollo II Product Features

- Dual camera configuration - featuring simultaneously viewable independent Infra-Red Thermal & Ultra-Low-Light Imaging Sensors.
- The Thermal Imager allows for safe operation in total darkness.
- The Low-Light 0.00015 Lux, camera amplifies even barely discernible light to render a crisp detailed picture in any low-light condition.
- Pan, Tilt and 2x Digital Zoom.
- Thermal image has a choice of 5 finger tip controlled color pallets.
- Return to "Home" position control on the Control-Unit Camera Direction Indicator.
- Low profile, classic, ergonomic design
- Sealed & heated camera enclosure to withstand the harshest of environments.
- Saltwater & corrosion resistant construction with rugged triple-primed marine grade aluminum housing.
- Optional Interface for IP Control and Viewing Video.
- The Apollo II is simple to use and requires no training.
- 24 Month Warranty.



Apollo II TH or Apollo II LL



Apollo II Thermal TH

The **Apollo II TH** is the thermal model of the Apollo II camera. The **OceanView Apollo II TH** camera incorporates a thermal imager with a 2x digital zoom, an on-screen camera direction indicator and five choices of color pallets in which to view the image.

Apollo II Low-Light LL

The **Apollo II LL** is the Low-Light model of the Apollo II camera. The **Apollo II LL** uses ultra low-light technology discernible down to 0.00015 lux.

By separating our thermal and low-light technology into two different, dedicated products, we can offer each one as a more economical package. Now consumers who do not require both functions can choose the feature they need. The **Apollo II** combined low-light, thermal camera is available for consumers who want a camera with both capabilities.

About OceanView

OceanView Technologies has been manufacturing sophisticated marine electronics for over two decades. OceanView allows your journey into total darkness, low-light, twi-light, torrential rain, some fog conditions and even intense sun to become a safe and cautious one. Let us turn night into day for you.

We offer a full line of thermal imaging options as well as low-light and high quality color cameras. Our systems offer seamless integration with any marine monitor or TV and integrate easily with all marine electronics available today. We offer an appropriate solution to fit any need.

OceanView camera systems may be controlled by the U.S. Government for export purposes. They may not be exported or re-exported without first consulting relevant U.S. Export Administration Regulations or International Traffic in Arms Regulations and obtaining the proper USG approvals. They may not be used in the design, development, production or use of nuclear, chemical or biological weapons or missiles. Contact OceanView Technologies Inc. for more information.



OceanView Technologies, Inc.

1181 South Rogers Circle Boca Raton FL, USA 33487
954.727.5139 • www.nightboating.com • sales@oceanviewtech.com

APOLLO II

SPECIFICATIONS

Thermal Imager Specifications

Resolution:	320 x 240
Detector Type:	Uncooled Microbolometer
Spectral Response:	7 to 14um
Field of View:	36°
Zoom:	2x Digital
Video Output:	NTSC (PAL Optional)
Frame Rate:	30Hz Standard, 9Hz (Int'l)
Human Detection Range:	1,200' (365.76m) with 36° FOV

Ultra Low Light Imager

Resolution:	570 Lines
Picture Element:	379K Pixels
Scanning Rate:	2:1 Interlaced
Minimum Scene Illumination:	0.00015 Lux
Lens (Focal Length):	25mm
Field of View:	15°

Product Specifications

Camera Size:	9.0" w x 8.0" h x 9.0" d (22.9cm w x 20.3cm h x 22.9cm d)
Weight:	7.5lbs (3.4kg)
Material:	Corrosion resistant aluminum alloy
Color:	Marine White
Voltage:	9-32 VDC
Power Draw:	7 watts, 0.4 amps at 24 volts or 0.8 amps at 12 volts
Operation Temp:	10° to 122°F (-12° to 50°C)
Environmental Enclosure:	IP67 Rated
Tilt Angle:	10° up & 17° down
Tilt Speed:	7° per second
Pan:	360° continuous
Pan Speed:	Fast 28°/sec & slow 15°/sec
Swept Volume:	12" diameter x 8.5" tall (30.48cm dia. X 21.59cm tall)
Max Control Cable length:	100' (30.48m)
Max Video Cable length:	65' (19.812m)
Operation:	LCD Control Unit
Control Stations:	Maximum of 6

Camera Control Unit Specifications

Dimensions:	6.75" w x 2.75" h x 2.0" d (17.145cm w X 6.985cm h x 5.08cm d)
-------------	---



Thermal Image

The Best View... an OceanView

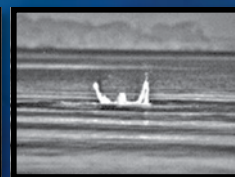
OceanView is the time-tested leader in Marine night-vision cameras. Navigation, surveillance and safety your priorities are our priorities!



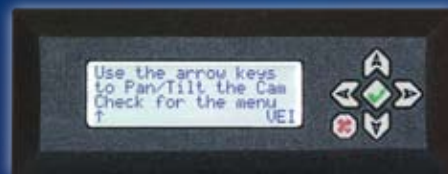
Thermal Image



Ultra-Low-Light Image



Thermal Image



Apollo II
LCD Control-Unit

Camera Control-Unit Features

The **Apollo II Control-Unit** is the most sophisticated on the market today and it is simple to operate. It utilizes menu pages for ease of control of the operational features of the **Apollo II Dual Camera System**. It controls the Zoom, Pan and Tilt, color palettes and control-unit brightness. The unique Auto-Bright function in the menu adjusts the view on the display to the perfect brightness in any light condition. The initial display screen on the Control-Unit itself allows simple aiming of the camera using the four arrow buttons, with subsequent menu pages offering a range of other control options.

The Camera Direction Indicator is clearly visible in the lower left corner of the Control-Unit.



OceanView Technologies, Inc.

1181 South Rogers Circle Boca Raton FL, USA 33487
954.727.5139 • www.nightboating.com • sales@oceanviewtech.com